

ARTOTEC Univers
with Art & Technology
*Between
Dream and Reality*

Catalogue ~ 2009



ARTOTEC
PROFESSIONAL DESIGNERS - CONCEPTS & PRODUCTIONS
ART & TECHNOLOGY

Play

Children



Recreational Sculptures

The FUTURE is now!

Play, health, Pedagogy for all

ARTOTEC is an organization with its own network of experts from different spheres including Technology, Science and Art.

ARTOTEC aims at promoting the creation of educational games for children in a new free space.

ARTOTEC's innovative recreational equipment called Recreational Sculptures have been created with health and safety, esthetic values, social and educational aspects in mind.

According to the european safety standard EN 1176:2008 and Universal Design.

The Recreational Sculptures meet the high technical requirements which are the trademark of present and future creations by **ARTOTEC**.

ARTOTEC is a network of plastic artists, designers, landscapers, architects, urban developers, ergonomists, scientists, engineers, producers, labourers and qualified entrepreneurs who work for the creation and realization of recreational, environmental, creative and innovative playgrounds.

Our products are easily accessible, integrated readily into the environment and leave a mark etched in a curved line as a signature of quality.

ARTOTEC pays particular attention and consideration to:

- The fantasy and curiosity of children
- The perspective and aspiration of children
- The evolution of children whatever their social background and the development of physical activities
- The children's strength and energy during intensive moments of activity.

Do not hesitate to contact us by telephone or by mail.

You will receive more details about installation and instructions policy, delivery and payment conditions as well as prices.

You can count on us to supply you with our expertise and recommendations.

Following ARTOTEC's quality policy.

Welcome to the Univers
of ARTOTEC with Art & Technology
for all.

brante

info@artotec.org

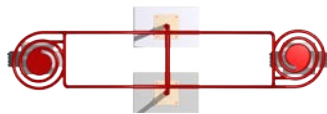


ARTOTEC
Recreational Sculptures - Children's playground - Urban furniture
[ART & TECHNOLOGY]



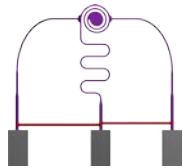
3

PRODUCTS TO BUY



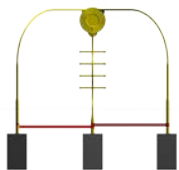
Seesaw ZOOLA

Color: 200 Colours RAL . Depending of the quantity units of the order.
Standards Colours: Classic 3001 Signal Red, RAL 4008 Signal Violet ~ RAL 1003 Signal Yellow ~ RAL 5002 Ultra Marine ~ RAL 5021 Water Blue ~ RAL 6004 Blue Green.



Climber GLING

Color: 200 Colours RAL . Depending of the quantity units of the order.
Standards Colours: Classic 3001 Signal Red, RAL 4008 Signal Violet ~ RAL 1003 Signal Yellow ~ RAL 5002 Ultra Marine ~ RAL 5021 Water Blue ~ RAL 6004 Blue Green.



Climber ZAN

Color: 200 Colours RAL . Depending of the quantity units of the order.
Standards Colours: Classic 3001 Signal Red, RAL 4008 Signal Violet ~ RAL 1003 Signal Yellow ~ RAL 5002 Ultra Marine ~ RAL 5021 Water Blue ~ RAL 6004 Blue Green.



Climber GONG

Color: 200 Colours RAL . Depending of the quantity units of the order.
Standards Colours: Classic 3001 Signal Red, RAL 4008 Signal Violet ~ RAL 1003 Signal Yellow ~ RAL 5002 Ultra Marine ~ RAL 5021 Water Blue ~ RAL 6004 Blue Green.

With reservation for eventually changes of the construction and the standard colours.



PRODUCTS TO BUY

Rotating chair ZICKI

Color: 200 Colours RAL . Depending of the quantity units of the order.
Standards Colours: Classic 3001 Signal Red, RAL 4008 Signal Violet ~ RAL 1003 Signal Yellow ~ RAL 5002 Ultra Marine ~ RAL 5021 Water Blue ~ RAL 6004 Blue Green.

Urban Furniture *Bench, Table* PALL~ETT

Color: 200 Colours RAL . Depending of the quantity units of the order.
Standards Colours: Classic 3001 Signal Red, RAL 4008 Signal Violet ~ RAL 1003 Signal Yellow ~ RAL 5002 Ultra Marine ~ RAL 5021 Water Blue ~ RAL 6004 Blue Green.

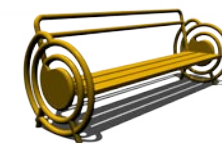
Urban Furniture *Bench* RE~WIND

Color: 200 Colours RAL . Depending of the quantity units of the order.
Standards Colours: Classic 3001 Signal Red, RAL 4008 Signal Violet ~ RAL 1003 Signal Yellow ~ RAL 5002 Ultra Marine ~ RAL 5021 Water Blue ~ RAL 6004 Blue Green.

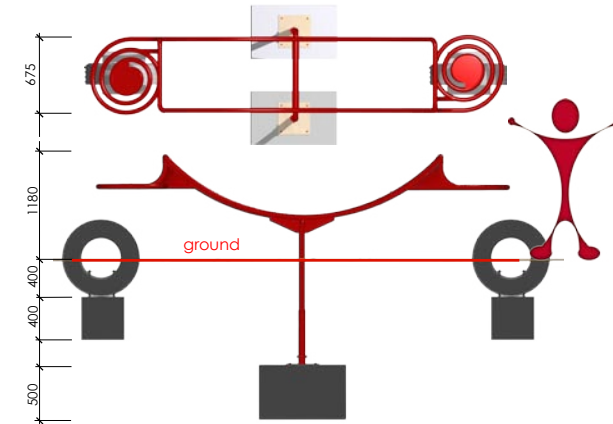
Slides BABOON

Color: 200 Colours RAL . Depending of the quantity units of the order.
Standards Colours: Classic 3001 Signal Red, RAL 4008 Signal Violet ~ RAL 1003 Signal Yellow ~ RAL 5002 Ultra Marine ~ RAL 5021 Water Blue ~ RAL 6004 Blue Green.

With reservation for eventually changes of the construction and the standard colours.



Recreational Sculpture Art & Technology Seesaw Zoola



Recommendation age: 5 +
conformed to the European Security Norms and Standards
EU-EN 1176:2008.

Certificated by: Taggen Miljö och Landskap AB
Download the certificat

The recreational sculpture is manufactured following strictly the European norms and standard ISO 9001:2008 and ISO 14001

Certificat welding category: - B - normes EU-EN 5817:2004

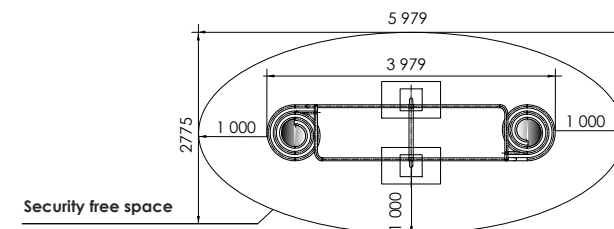
Category anticorrosive: BSK 99 C4

Fondations: 2 st
Weight: 100 kg
Maximal Charge : 3 555 kg
Number of childrens: 8
Colour: Ral 3001 signal red

Recommendation
Security area :
Following the standard
EU-EN 1176:2008
40 cm sand or equivalent.

Maximum High: max 1180 mm
Balance Axial: 12 °

Fondation:
To be installed on a well drained
ground.
2 foundations reinforced concrete
500 x 500 x 800 mm



Innovative Equipement
children's playground
for all

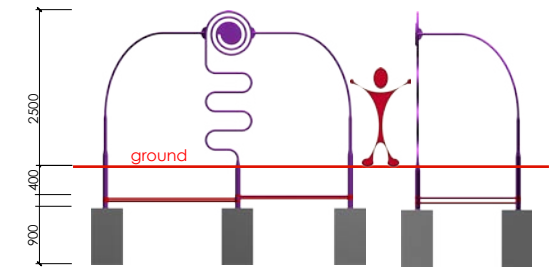




Recreational Sculpture

Art & Technology

Climber Gling



Recommendation age: 5 +
conformed to the European Security Norms and Standards
EU-EN 1176:2008.

Certificated by: Taggen Miljö och Landskap AB
Download the certificat

The recreational sculpture is manufactured following strictly the
Europeans norms and standard ISO 9001:2008 and ISO 14001

Certificat welding category - B - normes EU-EN 5817:2004

Category anticorrosive BSK 99 C4

Fondations: 3

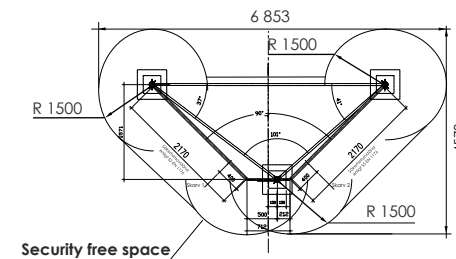
Weight: 145 kg

Maximal Charge : 975 kg

Number of childrens: 4

Couleur: Ral 4008 signal violet

Design: Frédéric Iriarte / ARTOTEC, 2009



Recommendation

Security area :

Following the standard
EU-EN 1176:2008
40 cm sand or equivalent.

Maximum High:

max 2 500 mm

Fondation:

To be installed on a well drenched
ground.

3 fondations reinforced concrete
500 x 500 x 900 mm



For childrens
Dreams and fantaisies
are realities

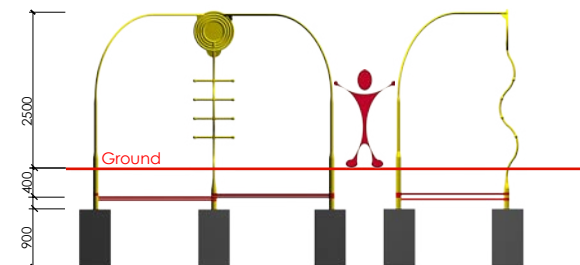


Health Physics
Mental Health
Wellness

Recreational Sculpture

Art & Technique

Climber Zan



Recommendation age: 5 +
conformed to the European Security Norms and Standards
EU-EN 1176:2008.

Certificated by: Taggen Miljö och Landskap AB
Download the certifikat.

The recreational sculpture is manufactured following strictly the European norms and standard ISO 9001:2008 and ISO 14001

Certificat welding category - B - normes EU-EN 5817:2004

Category anticorrosive BSK 99 C4

Fondations: 3

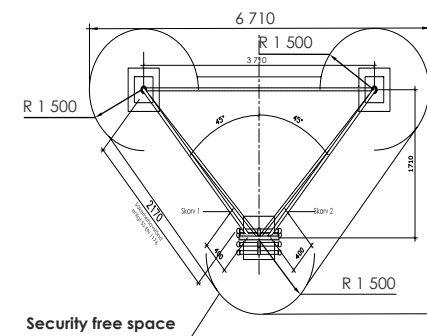
Weight: 145 kg

Maximal Charge : 975 kg

Number of childrens: 4

Coulour: Ral 4008 signal violet

Design: Frédéric Iriarte / ARTOTEC, 2009



Recommendation

Security area :

Following the standard
EU-EN 1176:2008
40 cm sand or equivalent.

Maximum High:

max 2 500 mm

Fondation:

To be installed on a well drained
ground.
3 fondations reinforced concrete
500 x 500 x 900 mm

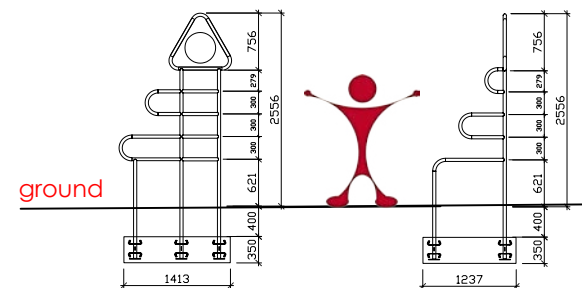


Accessibility,
play and pedagogy

Recreational Sculpture

Art & Technique

Echelle Gong



Recommendation age: 5 +
conformed to the European Security Norms and Standards
EU-EN 1176:2008.

Certificated by: Taggen Miljö och Landskap AB
Download the certificat

The recreational sculpture is manufactured following strictly the European norms and standard ISO 9001:2008 and ISO 14001

Certificat welding category - B - normes EU-EN 5817:2004

Category anticorrosive BSK 99 C4

Fondations:: 4

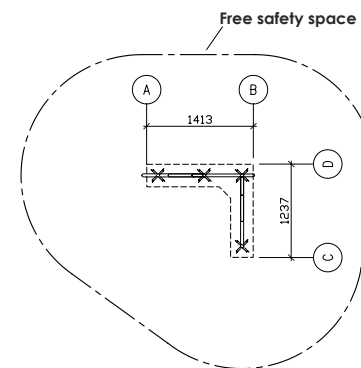
Weight: 125 kg

Maximal Charge : 975 kg

Number of childrens: 10

Couleur: Ral 5021 water bleu

Design: Frédéric Iriarte / ARTOTEC, 2009



Recommendation

Security area :
Following the standard
EU-EN 1176:2008
40 cm sand or equivalent.

Maximum High: 2 556 mm

To be installed on a well
drened ground.
2 fondations reinforced con-
crete 300 x 350 x 1200 mm
300 x 350 x 1600 mm

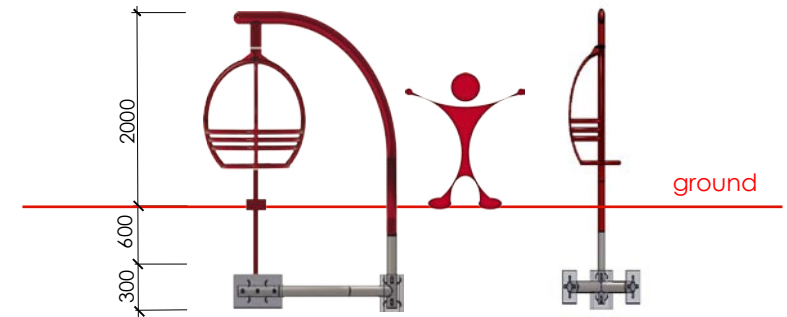
Upcoming
very soon!



Recreational Sculpture

Art & Technology

Rotating chair ZICKI



Recommendation age: 5 +
conformed to the European Security Norms and Standards
EU-EN 1176:2008.

Certificated by:

The recreational sculpture is manufactured following
strickly the Europeans normes and standard ISO 9001:2008
and ISO 14001

Certificat welding category - B - normes EU-EN 5817:2004

Category anticorrosive BSK 99 C4

Fondations: 3

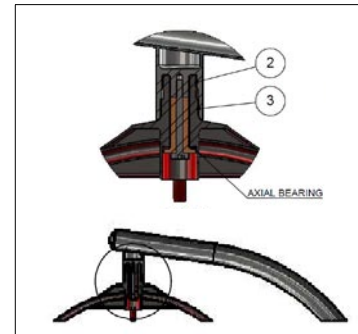
Weight: 159 kg

Maximal Charge : 475 kg

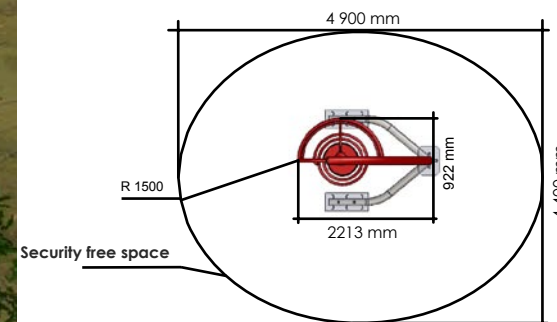
Number of chidrens: 4

Coulour: Ral 3002 Carmin red

Design: Frédéric Iriarte / ARTOTEC, 2009



Special spinner



Recommendation

Security area :

Following the standard
EU-EN 1176:2008
40 cm sand or equivalent.

Maximum Heigh:

max 2 000 mm

Fondation:

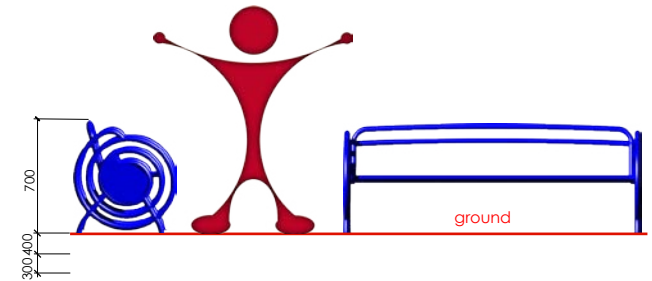
To be installed on a well drained ground.
3 fondations reinforced concrete
400 x 600 x 300 mm



Recreational Sculpture

Art & Technology

Bench REWIND



Recommendation age: 5 +

conformed to the European Security Norms and Standards
EU-EN 1176:2008.

Certificated by: Taggen Miljö och Landskap AB

Download the certificat

The recreational sculpture is manufactured following strictly the Europeans norms and standard ISO 9001:2008 and ISO 14001

Certificat welding category - B - normes EU-EN 5817:2004

Category anticorrosive BSK 99 C4

Fondations: 2

Weight: 90 kg

Maximal Charge : 675 kg

Number of childrens: 6

Color: Ral 4008 signal yellow

Design: Frédéric Iriarte / ARTOTEC, 2009

Recommendation

Security area :

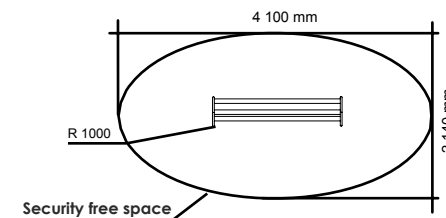
Following the standard
EU-EN 1176:2008
10 cm sand or equivalent.

Maximum Heigh:

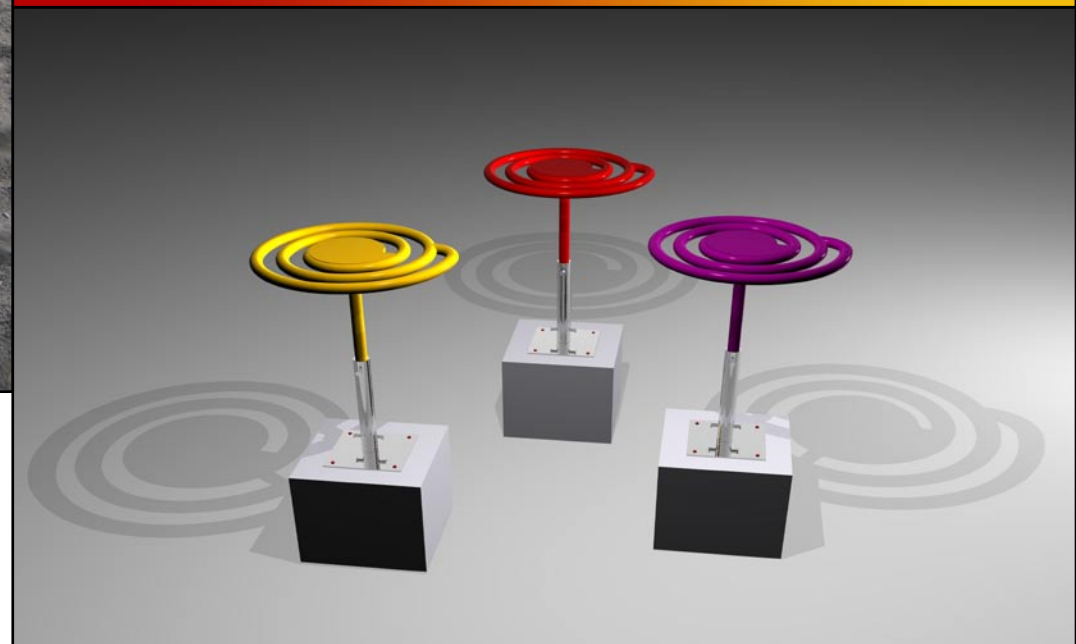
max 700 mm

Fondation:

To be installed on a well drened ground.
2 fondations reinforced concrete
concrete 300 x 300 x 400 mm



Urban furniture PALL-ETT



Recommendation age: 5 +
conformed to the European Security Norms and Standards EU-EN 1176:2008.

Certificated by: Taggen Miljö och Landskap AB

Download the certificat

The recreational sculpture is manufactured following strictly the Europeans normes and standard ISO 9001:2008 and ISO 14001

Certificat welding category - B - normes EU-EN 5817:2004

Category anticorrosive BSK 99 C4

Fondation: 1 st

Weight: 25 kg

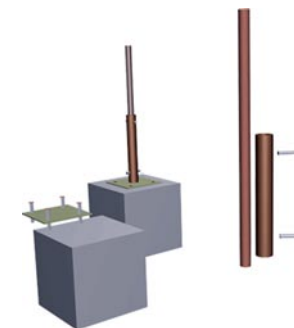
Maximal Charge: 329 kg

Number of childrens 4

Coulour: Ral 4008 signal violet /

Ral 3001 signal red / Ral 1003 signal yellow

Design: Frédéric Iriarte / ARTOTEC, 2009



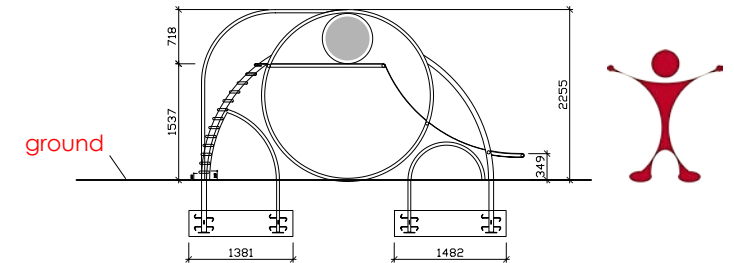
Recreational Sculpture Art & Technology

Upcoming very soon!

Recreational Sculpture

Art & Technology

Slides BABOON



Recommendation age: 5 +
conformed to the European Security Norms and Standards EU-EN 1176:2008.

Certificated by:

The recreational sculpture is manufactured following strictly the European norms and standard ISO 9001:2008 and ISO 14001

Certificat welding category - B - normes EU-EN 5817:2004

Category anticorrosive BSK 99 C4

Foundations: 4

Weight: 145 kg

Maximum load: 3 555 kg

Number of children: 8

Colour: Ral 5021 Water Blue ~ RAL system

Design: Frédéric Iriarte / ARTOTEC, 2008-2010

Recommendation

Security area :

Following the standard

EU-EN 1176:2008

10 cm sand or equivalent.

Maximum critical fall height: 1537 mm

Maximum height: 2 255 mm

Safety space: 1 500 mm

Foundation:

For installation in a well-drained ground.

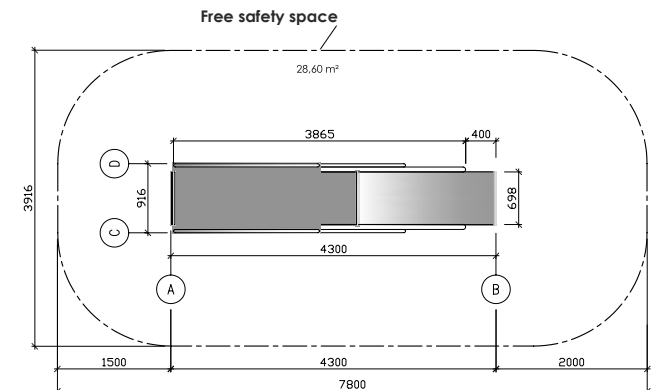
4 concrete foundations

2 p foundations

350 x 350 x 1381 mm

2 p foundations

350 x 350 x 1482 mm



Safety

Installation
Delivery
Garanties

Ecology
Environement
Sustainable
Cyclic

Technology
Research
Innovation
Solution



ARTOTEC
Recreational Sculptures - Children's playground
ART & TECHNOLOGY

Quality

Art
Design
Sensitivity

Health

Pedagogy
Didactic

ARTOTEC has transcended the border between art and technology.

A fusion, a collaboration, working with multi-disciplinary research.

Technology facilitated the expression and complexity of expression of art for visionary, dreams, illusions, utopias and helping fantasy become reality.

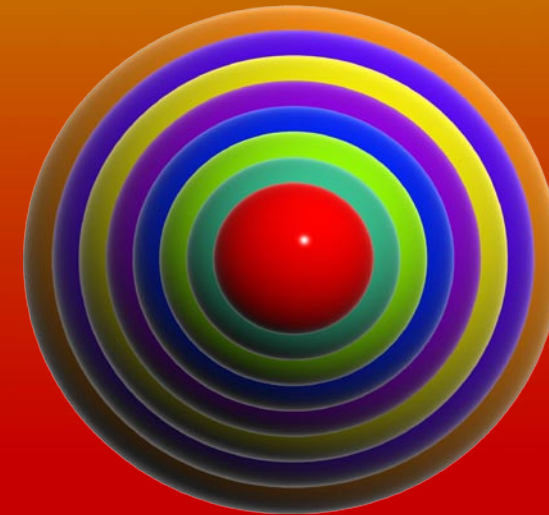
Material knowledge- graphical techniques 2D, 2,5D, 3D- design plans, construction calculations, demands and 'requirements, technical and scientific presentation, fabrication methods, certification and standards, development, enterprise, new techniques, every technique require its own technology.

ARTOTEC has created a stimulating Art Form with care and quality for future generations.

From the drawing board to playgrounds realization.

ARTOTEC displays professionalism in every step of the way.

ARTOTEC AB and **ARTOTEC** /Research



SAFETY



QUALITY



HEALTH



PEDAGOGY ~ DIDACTIC



ART ~ DESIGN ~ SENSITIVITY



TECHNOLOGY ~ RESEARCH ~ INNOVATION ~ SOLUTION



ENVIRONEMENT ~ SUSTAINABLE ~ CYCLIC



DELIVERY ~ GARANTIES



SAFTETY

Product, safety, installation and maintenance

All ARTOTEC products are patented and conform to European Security Norms-EN 1176:2008.

ARTOTEC products are easy to install, robust and durable.

Thanks to the products' superior quality along with an easy and minimum maintenance rate, ARTOTEC guarantees the durability of its products. Contact us to find out more about installing our products.

Monteringsanvisning Produkttegenskaper Användningsområde Skötselanvisning

Certifierad enligt Europeiska säkerhetsstandarder SS-EN 1176 för konstruktion och SS-EN 1177 för fallutrymme och fallundantag.
Certifierad av Svensk Leksäkerhetskontroll AB, bekräftingsnummer 0708-999-183.
Certifierad av Svecia AB, behörighetsnummer 1462.
Certifierad konstruktion enligt ISO 9001:2000 och SS-EN 1176.
Av ÅF Konsult AB, auktoriserad av Svecia AB.
Certifierad tvättning enligt SS-EN 288 av Konstruktions-Svech AB.
Förhållning Korrosionsteknik AB.
Certifierad förbehandling enligt ISO 12944-4.
Certifierad löslighet enligt SS-EN ISO 8503-2 och ISO 8501-1.
Certifierad mjölkstansord enligt ISO 14001.
Kontrollutvärdering enligt ISO 9001:2000.
Förhållning Korrosionsteknik AB.
Auktoriserad riskytvärdering av auktorisationsområdet enligt ISO 9001:2000.
Standard SS-EN ISO 9000.
ISO 9002.

Monteringsanvisning Produkttegenskaper Användningsområde Skötselanvisning

Certifierad enligt Europeiska säkerhetsstandarder SS-EN 1176 för konstruktion och SS-EN 1177 för fallutrymme och fallundantag.
Certifierad av Svensk Leksäkerhetskontroll AB, bekräftingsnummer 0708-999-183.
Certifierad av Svecia AB, behörighetsnummer 1462.
Certifierad konstruktion enligt ISO 9001:2000 och SS-EN 1176.
Av ÅF Konsult AB, auktoriserad av Svecia AB.
Certifierad tvättning enligt SS-EN 288 av Konstruktions-Svech AB.
Förhållning Korrosionsteknik AB.
Certifierad förbehandling enligt ISO 12944-4.
Certifierad löslighet enligt SS-EN ISO 8503-2 och ISO 8501-1.
Certifierad mjölkstansord enligt ISO 14001.
Kontrollutvärdering enligt ISO 9001:2000.
Förhållning Korrosionsteknik AB.
Auktoriserad riskytvärdering av auktorisationsområdet enligt ISO 9001:2000.
Standard SS-EN ISO 9000.
ISO 9002.

Monteringsanvisning Produkttegenskaper Användningsområde Skötselanvisning

Certifierad enligt Europeiska säkerhetsstandarder SS-EN 1176 för konstruktion och SS-EN 1177 för fallutrymme och fallundantag.
Certifierad av Svensk Leksäkerhetskontroll AB, bekräftingsnummer 0708-999-183.
Certifierad av Svecia AB, behörighetsnummer 1462.
Certifierad konstruktion enligt ISO 9001:2000 och SS-EN 1176.
Av ÅF Konsult AB, auktoriserad av Svecia AB.
Certifierad tvättning enligt SS-EN 288 av Konstruktions-Svech AB.
Förhållning Korrosionsteknik AB.
Certifierad förbehandling enligt ISO 12944-4.
Certifierad löslighet enligt SS-EN ISO 8503-2 och ISO 8501-1.
Certifierad mjölkstansord enligt ISO 14001.
Kontrollutvärdering enligt ISO 9001:2000.
Förhållning Korrosionsteknik AB.
Auktoriserad riskytvärdering av auktorisationsområdet enligt ISO 9001:2000.
Standard SS-EN ISO 9000.
ISO 9002.

Monteringsanvisning Produkttegenskaper Användningsområde Skötselanvisning

Certifierad enligt Europeiska säkerhetsstandarder SS-EN 1176 för konstruktion och SS-EN 1177 för fallutrymme och fallundantag.
Certifierad av Svensk Leksäkerhetskontroll AB, bekräftingsnummer 0708-999-183.
Certifierad av Svecia AB, behörighetsnummer 1462.
Certifierad konstruktion enligt ISO 9001:2000 och SS-EN 1176.
Av ÅF Konsult AB, auktoriserad av Svecia AB.
Certifierad tvättning enligt SS-EN 288 av Konstruktions-Svech AB.
Förhållning Korrosionsteknik AB.
Certifierad förbehandling enligt ISO 12944-4.
Certifierad löslighet enligt SS-EN ISO 8503-2 och ISO 8501-1.
Certifierad mjölkstansord enligt ISO 14001.
Kontrollutvärdering enligt ISO 9001:2000.
Förhållning Korrosionsteknik AB.
Auktoriserad riskytvärdering av auktorisationsområdet enligt ISO 9001:2000.
Standard SS-EN ISO 9000.
ISO 9002.



Utlåtande är baserat på svensk standard gällande för lekredskap SS-EN 1176

Certifikat

Utlåtande är baserat på en konstruktionsbeskrivning daterad 2008-03-08.

Certifikat omfattar redskap med följande beteckningar:
"GLING", "ZAN", "ZOOA", "PALL-ETT".

Konstruktör:
Fridrik, Hans, Skötblige.

Underlag för besiktningsutlåtande:
Utlåtande är baserat på en konstruktionsbeskrivning daterad 2008-03-08.

Uppfylt krav på tillförlitlighet, konstruktion och tekniska krav, kompletterat detta utlåtande.

Genomgått för samliga avsevärda tekniska "PALL-ETT"

- Samliga redskap uppfyller kraven i SS-EN 1176:2008.

Taggen
mjölk och lekredskap AB

Certifikat Leksäkerhet

Detta certifikat är upprättat efter kontroll av krav och ritningar i gällande standard för Leksäkerhet SS-EN 1176:2008, utgivet av SIS Förlag AB, Stockholm. Denna standard är den svenska versionen av Europastandard EN 1176:2008.

Utfärdare:
Artotec AB, 153 30 Jämså.

Genomgått av:
Klättestege ZAN
Klättestege GLING
Sjippall, lekredskap PALL-ETT

Samtliga beskrivningar och konstruktionsritningar är godkända av Fridrik Frantz.

Utlåtande:
Utlåtande är baserat på denna certifikation.
Dessa redskap är konstruerade enligt denna standard och de tekniska kraven i denna standard är uppfyllda. Genomgått av Fridrik Frantz.
Vidare har följande presenterats för kvalitetskontroll i de olika processerna vid tillverkningen, som dokumentation av uppfyllelse mot de krav som ställs i gällande standard Leksäkerhet SS-EN 1176:2008. De olika kvalitetsdokumenten från respektive process kompletterar detta certifikat.

Utlåtande:
De ovan angivna lekredskapen uppfyller kraven i SS-EN 1176:2008.

TAGGEN mjölk och lekredskap AB
Sedan den 8 juni 2009
Dan Frantz
Dan Frantz
Certifierad Besiktningsman för lekredskap och hjälptor
Certifierad av SVEDECERT AB, certifieringsnummer CPL 076-08
Certifierad av SWEDCERT AB, behörighetsnummer 1458.

Välkommen till oss!
188 33 Sune
08 22 27 20
08 27 29 06
info@taggen.se

Storgatan 1
404 32 Högbo
08 720 72 90
08 720 72 12
taggen@taggen.se

www.taggen.se

Org.no 516201-1056
E-mail: info@taggen.se
Mottagningsnr 01 516201-1056-01
Platshög 18 801
Barngruppen 08 720 3141





Safety:

All play equipment and furniture from ARTOTEC conforms to the latest standards and European safety norms EN 1176:2008 and have been a driving force for the renewal of the standard.

The recreational sculptures are manufactured following the European standards ISO 9001:2008 et ISO 14001

Certificat Welding: category - B - EU-EN 5817:2004

Category anticorrosive BSK 99 C4

Safety sign are displayed on each unit following the European safety standards.



QUALITY

ARTOTECs equipment is very easy to assemble, install like a mechanical game task or Lego games.

Simple 1, 2 or 3 foundations for each sculpture, user manual, maintenance schedule is attached to the order and delivery.

A minimum of pre-installation work is required thus the total cost.

- ✓ Développement ~ Art ~ Design Method
- ✓ Quality Materials
- ✓ Quality Color
- ✓ Play Value ~ Pedagogy
- ✓ Accessible ~ Integrat
- ✓ Diversity ~ Identity
- ✓ Environment ~ Sustainability
- ✓ Safety ~ Health



ARTOTEC's Values

ARTOTEC helps things move at the speed of life:
the future is now.

At the speed of light ... ~ (((Follow us))) ~

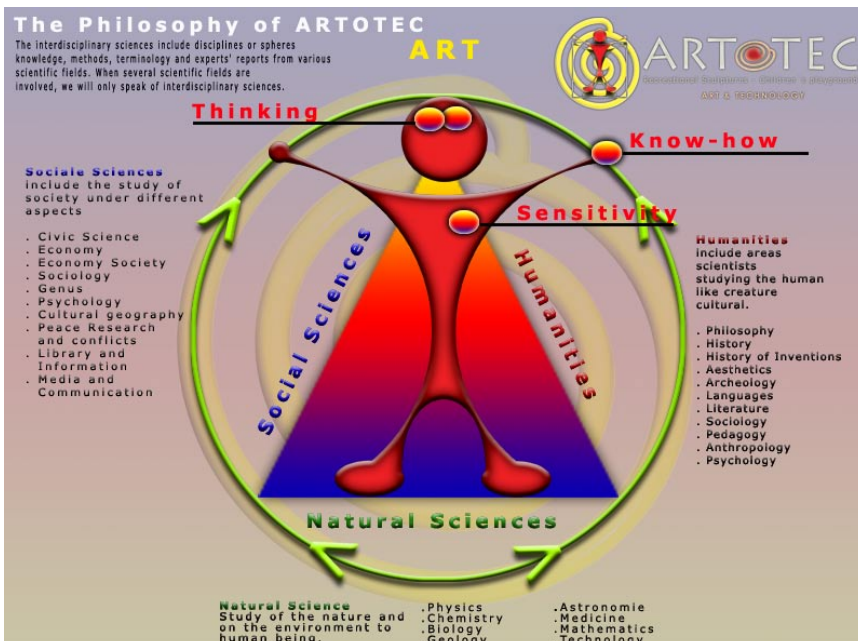
We might not be making as much money as we might,
but we continue to dream for the benefit of everyone.

☀ Quote from Albert Einstein

"Imagination is more important than knowledge. For
knowledge is limited while imagination coats the en-
tire world, stimulating discoveries and changing devel-
opment. "

Here at ARTOTEC we have both imagination and knowledge.

ARTOTEC = ART + TECHNOLOGY



Production ARTOTEC ©

- ☉ **QUALITY ARTOTEC** ~ following ARTOTECs qualities values
- ☉ **FORM** ~ organic, soft, harmonic, dynamic, fantasy
- ☉ **COLOUR** ~ Claire, stimulates contemplative activities and energizing effects
- ☉ **QUALITY COLOR** ~ anticorrosive, conforming to standard ISO 14001
- ☉ **FUNCTION** ~ cognitive ergonomics, tactile and visual understanding simple games providing values for both the mental as physical, centre of entertainment, fun and discovery.
- ☉ **MATERIAL** ~ rugged, durable steel tubes certified according to standards and European standards ISO 14001 and EU-EN 288, SS-EN 287-1
- ☉ **SOCIAL ASPECTS** ~ give character, an identity to a place, create an activity center for usability and discovery, expands and enriches awareness and social relationships, privileges and incorporates diversity that stimulates communication. A public relationship with children and adults as a users and viewers.
- ☉ **HEALTH** ~ physical and mental activities provide many positive effects
- ☉ **ACCESSIBILITY** ~ for all children, parents, families, adults, seniors, lovers, friends, people with physical or mental disabilities .
- ☉ **PEDAGOGY** ~ learning through playing
- ☉ **SAFETY** ~ conformity to European norms and standards EU-EN 1176:2008 and SS-EN 1177:2008.

HEALTH

☀ **Play is the first activity in children**

☀ **To play is to learn about life.**

Play is more important for children with disabilities

✓ **ARTOTEC follows the recommendations regarding the individual's physical and mental disabilities.**

✓ **ARTOTEC is active in respect of accessibility**

✓ **ARTOTEC is active with respect to the user.**

✓ **ARTOTEC follows the recommendations regarding the individual's physical and mental disabilities.**

In May 2000, the Swedish parliament adopted the National Action Plan for disability (Bill 1 / 2000:), representing a target document for the Swedish disability policy. One of the key elements of the plan is that accessibility for people with disabilities will be improved. The NAP is one of the objectives of the disabled community to be designed so that people with disabilities of all ages can be afforded full participation in society. The creation of such accessibility under the Action Plan should be a priority which applies to children with disabilities. The Action Plan process is the child's perspective in accordance with the UNCRC which is to be included in all priority areas of work. The government's monitoring of the Action Plan (2005 / 0: 110) found that children with disabilities are more often likely to be limited in their independence process. Play and learning through trial and error is part of the development process toward becoming independent. According to the government, it is important that children's environments, such as playgrounds, are accessible to all.

✓ **ARTOTEC is active in respect of accessibility**

Playgrounds are covered by the scope of the planning and construction process related to community planning in general. The building regulations are required to optimize availability and apply inter alia to playgrounds. In construction law, the Planning and Building Act (PBA), plays a central role. The overall provisions of Chapter 2 of PBA state the planning should promote a good habitat from a social point of view.

Public places shall be designed with accessibility for all. Concerning the construction of new items, there are particular regulations in respect of playgrounds and accessibility for people with disabilities. Chapter 3 section 15 of the PBA states that a playground / play area must be designed so that it can be used by persons with reduced mobility or orientation, unless it is unwarranted in view of the terrain and conditions in general (BFS 2004:15, BFS 2008:6).

RBU's 2006 annual report found that parents of children who use wheelchairs often refrain from visits to playgrounds for several reasons. The most common reason is that it is not possible to access the playground equipment.

ARTOTEC's playground equipment can be easily placed on the foundation materials of rubber asphalt or synthetic turf.

✓ **ARTOTEC is active with respect to the user.**

Another reason that cause parents of children who use wheelchairs to refrain from visiting playgrounds is that it is difficult and tedious to lift the child into and out of a climbing frames and swings (RBU, 2006). ARTOTEC playground equipment is designed to enable children with impaired mobility to independently use these. All playground equipment has a colour and design that appeals to the imagination and inspires creativity.

The security areas located around the equipment also gives the opportunity to get close up to it in a wheelchair or with walking aids. The Zoola see-saw for example features a have a great seat with an open side which allows the child to move directly from the wheelchair to the swing seat.

Elséann Lundgren
(ARTOTEC Ergonomics / Health)
Ergonomist / Licensed occupational therapist



Health:

A Sense of well-being is a definition based on subjective notions of good health. Several researchers and theorists recommend the concept of well-being than good health (Jahren-Kristoffersen, 1998)

The current definition of good health is that it consists of the states of physical, psychological and social well-being. (Birgitta Rapp, 2001 Design and Health - The therapeutic benefits of design)

Ergonomics ~ Utilization:

Movement to and from playground equipment / wheelchairs is possible, how closely mobility aids (wheelchair, walker) can be placed.

The movement of the equipment - it is possible to re-position the user deeper into the seat, take steps in the climbing, put the user's knees on the step to climb the steps to achieve the desired position.

Seated / standing in the recreational sculpture - It is possible to complete with accessories (ex head restraints, seat belt) or their own support (for example seating shell).

Grabbing / Holding on - Handles are positioned and designed to fit a child's hand and can support the arm enabling a stronger grip.

Play - What did the child do whilst in the recreational sculpture? - Swing, climb, imaginative play, do something together / play with others.

Visual and tactile stimuli - the child responds spontaneously to form and coloured materials.

Cognition - the child understands how the equipment is used (to swing, to climb or sit on)

Art and play influence us in positive ways throughout the world know.

But how? What are the effects art and games have on our education, our health?

A playground is a place where one laughs, plays, learns, does physical activities, communicate or conduct research. This, among other things, awakens and is developing in children the social and relational concepts.

See "ENVIRONMENT HEALTH" literature references and links to more information about research by ARTOTEC / Research.

Health fysique = body functions and its benefits.

Psychological health = Well-being, Insurance and Liability

Health = intellectual and cognitive learning and teaching

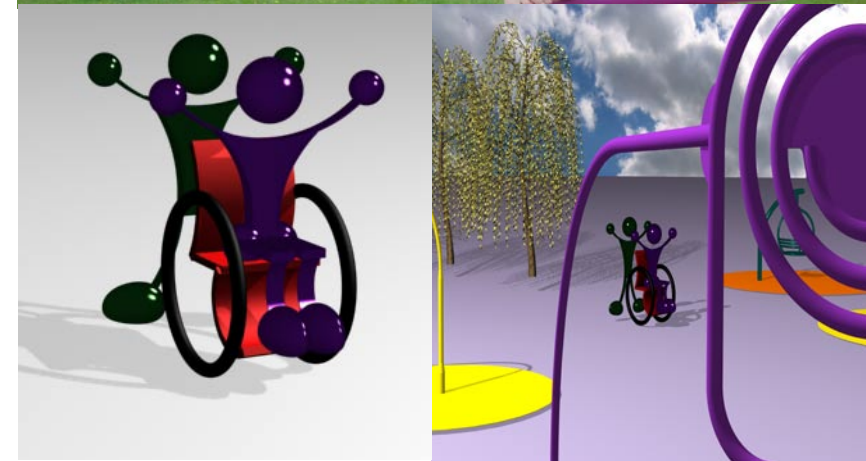
Emotional Health = easy to feel and express feelings

Health = social ease in social relationships and empathy

Spiritual Health = easy to find a peace of mind and mental reflections on all that surrounds us.

For more information: Research report on the website. www.artotec.org (search)

Health Physical
Mental Health
Well-being



PEDAGOGY DIDACTIC

Pedagogy ~ Didactic

ARTOTEC believes that a lot can be learned through play. Photos, art, shapes and design. All help to get acquire an understanding of aesthetics. A non-formal education in everyday life through play and experiences with and for children at the centerpoint.

The specially shaped spiral pattern of our recreational sculptures is intended to provoke thoughts about mathematical formulas, experimental physical laws, movements, patterns or by virtue of its simple design language.



Discovery is

a pivotal point of ARTOTEC's
philosophy of learning
through playing.

Learning through play and teaching
others to be creative and feeling good.

This is ARTOTEC's philosophy
for all to enjoy!

Physical Activity

Playing

Doing

Seeing

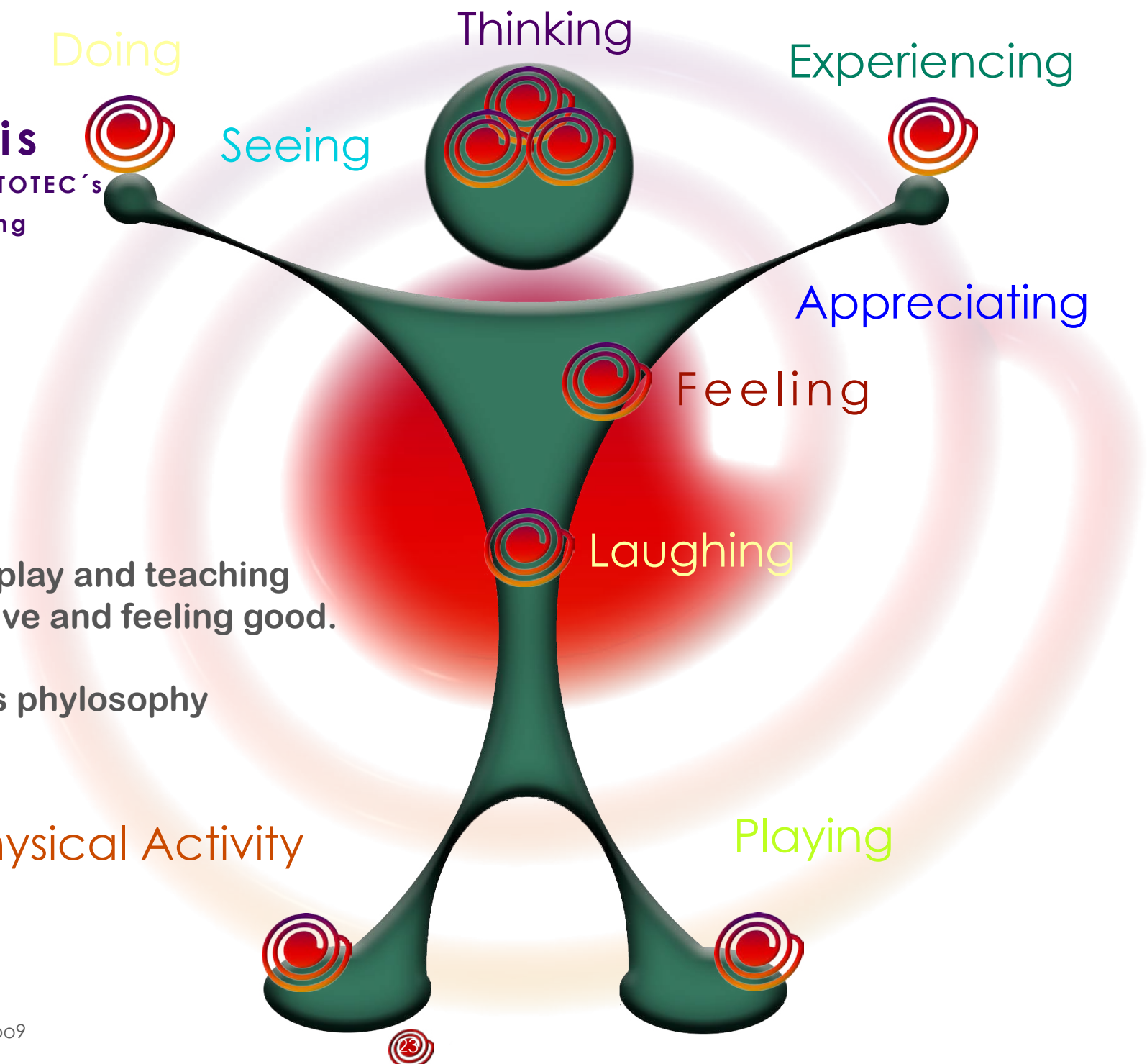
Thinking

Experiencing

Appreciating

Feeling

Laughing



ART DESIGN SENSITIVITY

INSPIRATION

Som att teckna en linje i landskapet, medan solen är i ständig rörelse, var ursprunget till inspirationen.

Så som barnen och deras första uttryck med formerna, färgen, streck och prickar.

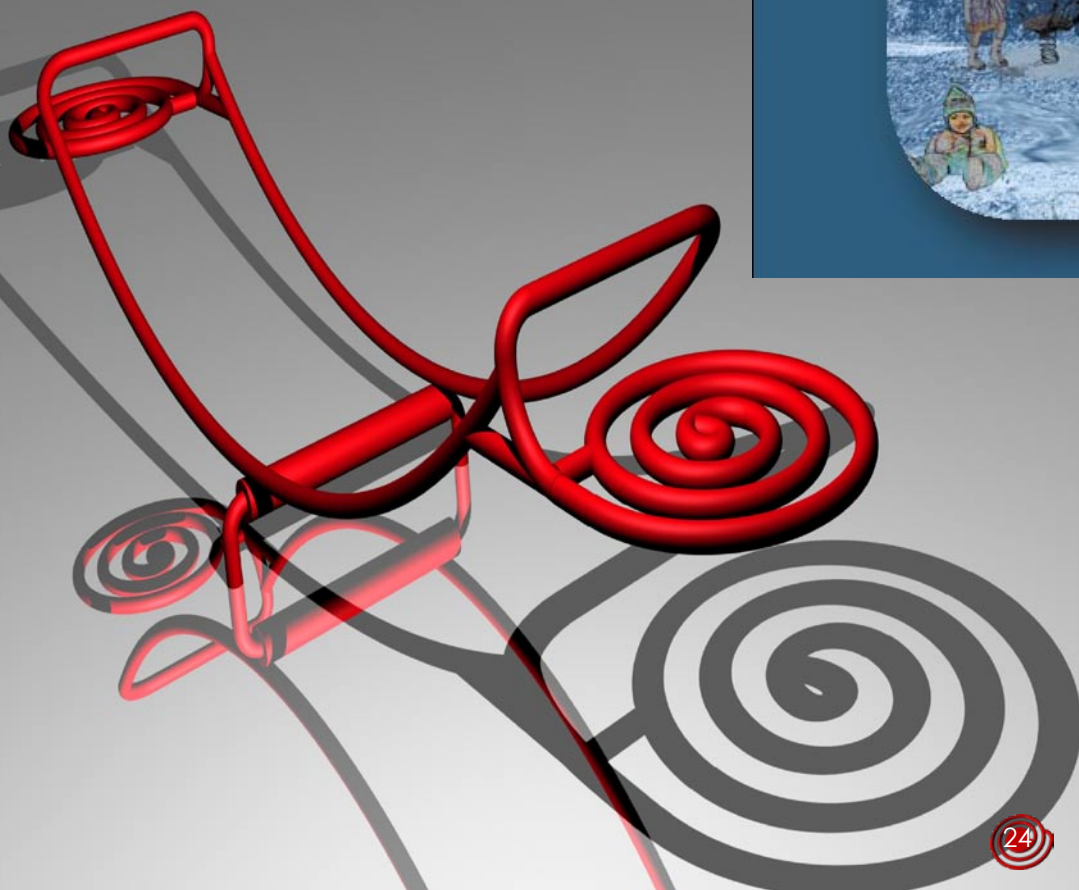
Ljus och skugga, kurragömma, hoppa, klättra, gunga, snurra, leka, vila. Barn och vuxna, unga och gamla, pappa och mamma.

En social plats för glädje och utveckling, för hälsa och fantasi.

En säker och kreativ miljö för en strålande uppväxt.

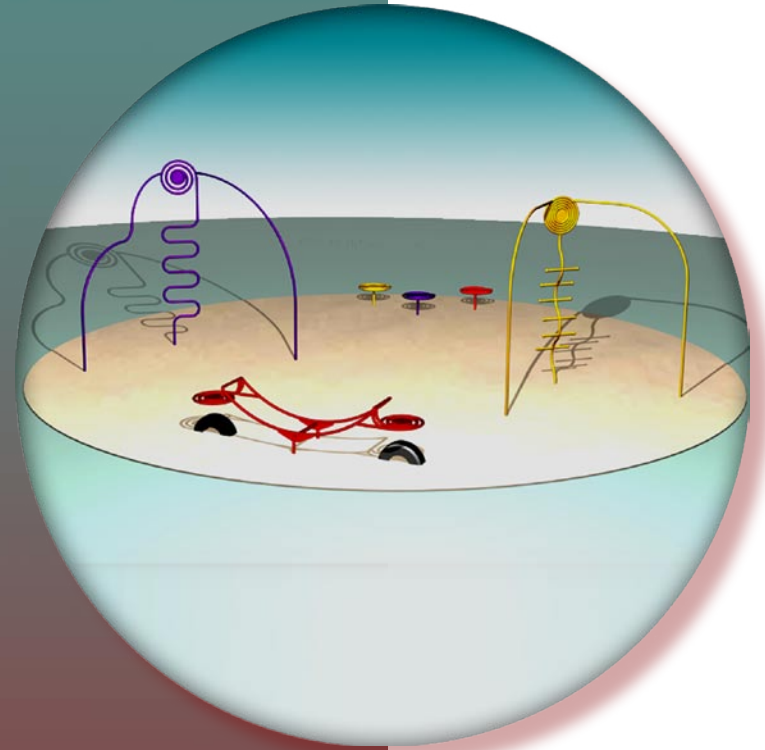
Att vara självlysande och lysa både på kvällar och i vintermörkret kunde ge omgivningen trygghet och lättillgänglighet.

Att satsa för barn är att satsa för framtiden.





For childrens
Dreams and fantaisies
are realities



TECHNOLOGY RESEARCH INNOVATION SOLUTION

ARTOTEC Technology

ARTOTEC has transcended the border between art and technology. A fusion, a collaboration, working with multi-disciplinary research.

Technology has facilitated the expression and complexity of the expression of art for visions, dreams, illusions, utopias and fantasy to become reality.

The concept of art Art participates with its notions of aesthetics, ideas of sensibility and quality, handcraft knowledge, psychological effects through perception and in the reflection of the quality of the work done all with dexterity and precision.

Through drawing on its competence, knowledge, the correct tools and significant intuition ARTOTEC is able to build its world of fantasy around the concept of children's playgrounds and for the future.

From the technical world of welding to the world of the compass, from 3 dimensional graphic representation to modelling down to the final touch, every elements require its own technique.

Material knowledge- graphical techniques 2D, 2,5D, 3D- design plans, constructions calculation, necessities and requirements – technical and scientific presentation, fabrication methods, certification and standards, development, enterprise, new techniques

“IBS, the *théorème* of Iriarte´s Bicentric Spiral”.

Book (hardcover, 40 colour images, 48 pages, 21 x21 cm) with text by Pehr Sällström (professor in physics at the University of Stockholm and Frédéric Iriarte teacher at KTH (Royal Academy of Technology Stockholm) founder of ARTOTEC. ISBN-nr 978-91-978337-0-7

ARTOTEC /Research

The interdisciplinary sciences include disciplines or spheres knowledge, methods, terminology and experts' reports from various scientific fields. When several scientific fields are involved, we will only speak of interdisciplinary sciences.

Plan development

2008-12-10 Grafical project plan with partners according to the *théorème* of Iriarte's Bicentric Spiral



IBS

ARTOTEC /Research

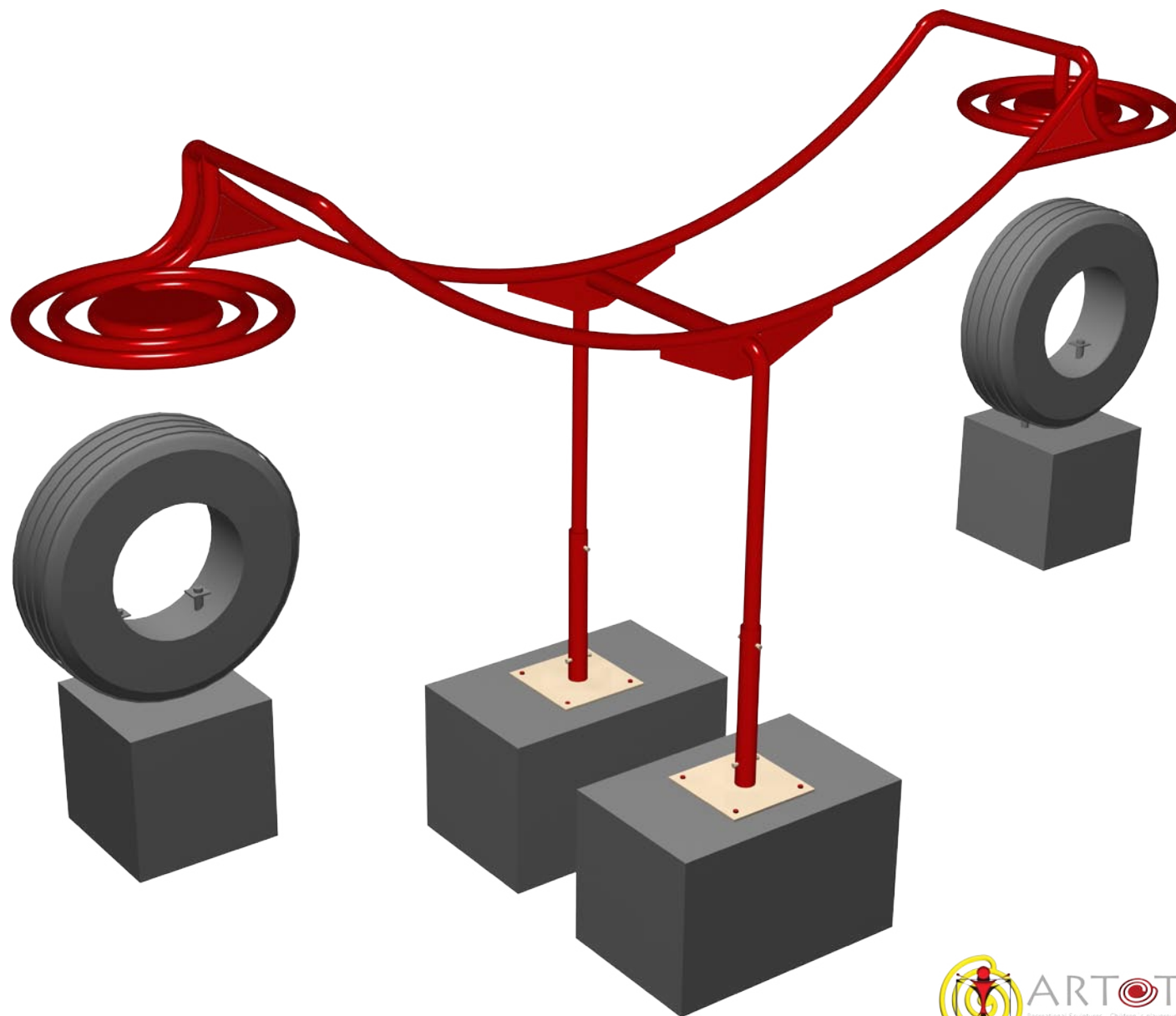
Our theory is based on the theorem of IBS, development, methods, applications and qualitative empirical research on artistic grounds.

“The Iriarte Bicentric Spiral and differentiation resembles that of Archimedes.” The theorem has already been applied in various models, among others in the areas of planning, planning projects, educational activities, work, study, analysis and phenomenology

- We can notice, so far that the value and impact of the discovery of these applications and they can lead in many areas. It is impossible today where the potential results of such a discovery could lead us.



Seesaw Zoola

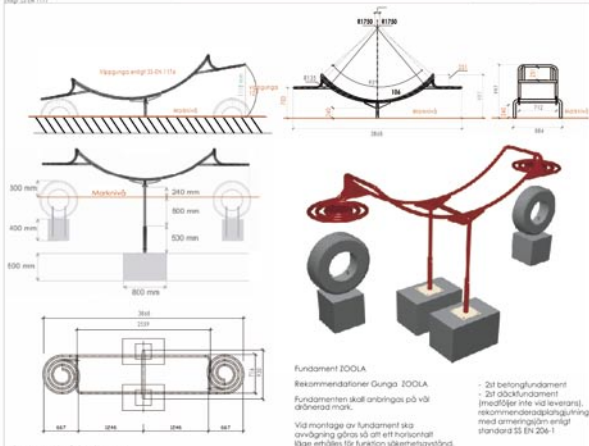


PRODUCTION ~ WELDING ~ FINISHING ~ PACKAGING

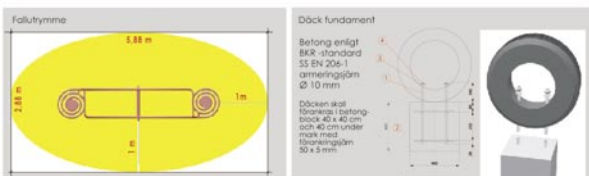
ARTOTEC ~ Art & Technology

Teknisk data: Fallhöjd, fallutrymme, säkerhetsavstånd, monteringsanvisning, skötselanvisning enligt europeisk säkerhetsstandard SS-EN 1176 och SS-EN 1177

Övervakningsplan enligt SS-EN 1176	Materialspecifikation Enligt teknisk specifikation enligt SS-EN 10210 och SS-EN 10219 Enligt teknisk specifikation enligt SS-EN 10210 och SS-EN 10219 Enligt teknisk specifikation enligt SS-EN 10210 och SS-EN 10219	Monteringsanvisning Använd monteringsanvisning enligt SS-EN 1176 och SS-EN 1177	Skötselanvisning Använd skötselanvisning enligt SS-EN 1176 och SS-EN 1177
--	---	---	---



Fundament Zoola
Rekommendationer Gunga Zoola
Fundamenten skall anbringas på väl förberedd mark.
Vid montering av fundament ska överlägg göras så att ett hölje av lämpligt läge erhålls för funktionssäkerheten.



- 1) 4st rostfritt gängstäng M12
 - 2) 1st tät armeringsjäm Ø10
 - 3) 4 st plattor 50x5, med hål Ø12
 - 4) 4 st Mutter M12
- Modellering enligt standard SS-EN 1177



**SUSTAINABILITY
ENVIRONMENT
LONGEVITY
LIVE-CICLE**

ARTOTEC's Environmental Policy

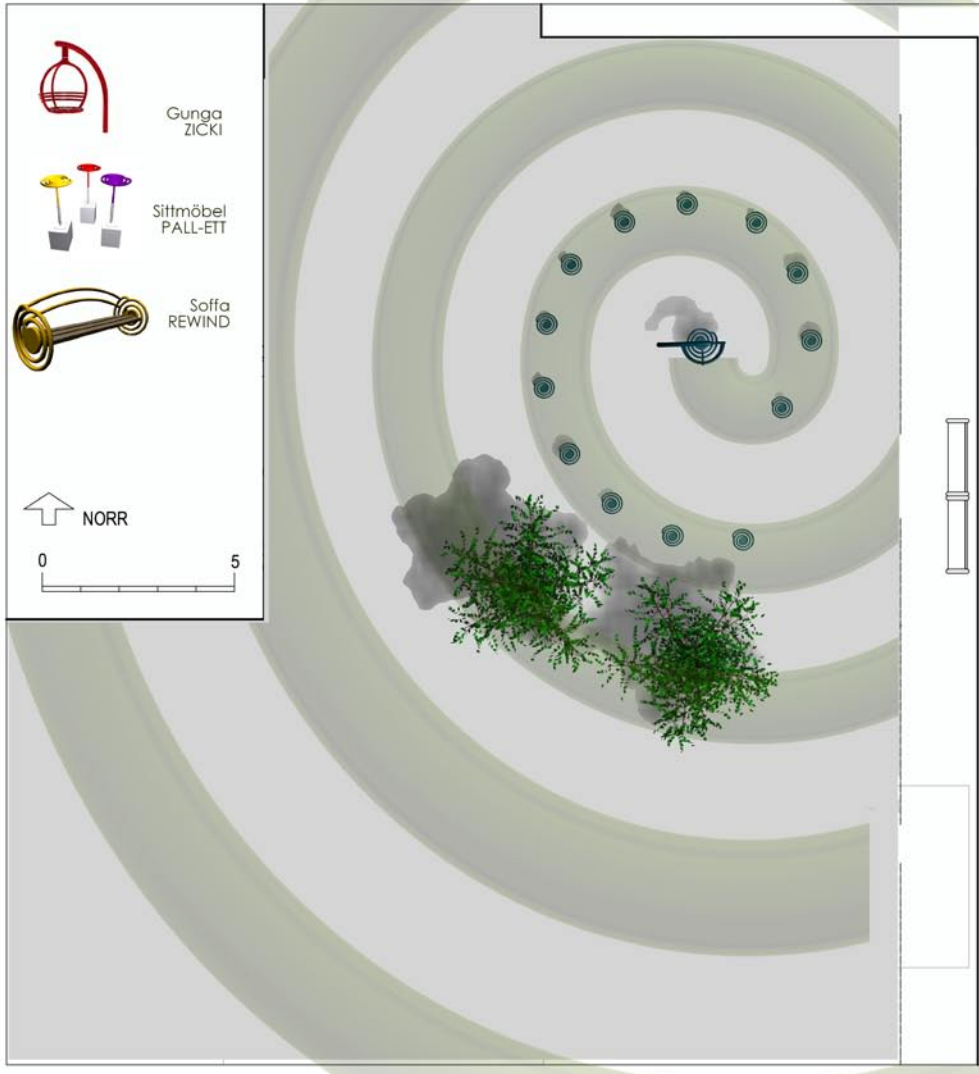
ARTOTEC is actively working towards a sustainable environment; minimizing its influence on the environment.

ARTOTEC always requires its suppliers to:

- √ follow the norms and standards.
- √ minimize industrial waste during production.
- √ be restrictive with the use of energy, water and other natural resources.
- √ promote products' lifecycles and ensuring their good quality.
- √ through an active dialogue with its manufacturers and suppliers in order to minimize environmental impact.
- √ requires a policy of continual improvement.

ARTOTEC's Quality Criteria

- √ Certified according to the european norms and standards EN 1176:2008
- √ Certified welding processes in compliance with -EN 5817
- √ Certified construction processes in compliance with ISO 9001
- √ Quality standards ISO 9001 and ISO 14001
- √ Anti Corrosion category BSK 99 – C4
- √ Finishing ISO 12944-4
- √ Surface preparation ISO 8501-1



Förskiss-projektet **SPIROL**

Inspiration ~ Innovation

Skiss-förslag
torg
2009

Etapp I, II och III





Children's Playground
GENETA - 2009



Delivery:

6 - 12 weeks after order confirmed or upon mutual agreement.

Guaranteed:

- 15 years after the date of purchase and in the event that a manufacturing defect. No returns granted.
- 10 year warranty for color except for overuse or injury,
- Easy to install, easy to maintain, easy to maintain, easy to upgrade eventually.
- Very durable (steel tubes treated 3-5 mm)

Beware any foundation is provided and do not include the installation. We can recommend and help you in planning when the orientation and location recommended.

ARTOTEC We know that children and adults are aware of their surroundings if they like them. A cultural environment is always respected. Quality durable materials that requires minimal installation and maintenance have many advantages.

All according to qualities and required by ARTOTEC.

100% made in Sweden!

Delivery - Transportation:

At the customer's expense. Schenkers is our partner for logistics.

With reservation for eventual change.



SIMPLE

☀ How do I install the products?

Easy! Only 1, 2 or 3 foundations are required for each piece of equipment or furniture. Instructions for assembly and maintenance will be attached to the order.

☀ All play equipment and furniture from ARTOTEC conforms to the latest standards and European safety norms EN 1176:2008 and have been a driving force for the renewal of the standard.

☀ What is the price for our recreational Sculptures and street furniture?
Call or send an email for a request.

☀ Can I get the drawings in DWG format?
Download them from the internet.

☀ What is the safety distance required? In accordance with European safety norms EN 1176:2008, there must be a minimum of 1.5 safety zone around each piece of equipment in the playground area.

☀ 6-12 weeks' delivery time depending on the quantity and colour choices in the same order. Delivery ex works.

☀ catalog and news can be downloaded from the website.

☀ 15 years warranty for metallic parts in accordance with ARTOTEC's policy. Material and finish recommendations and maintenance instructions will be supplied with the order.

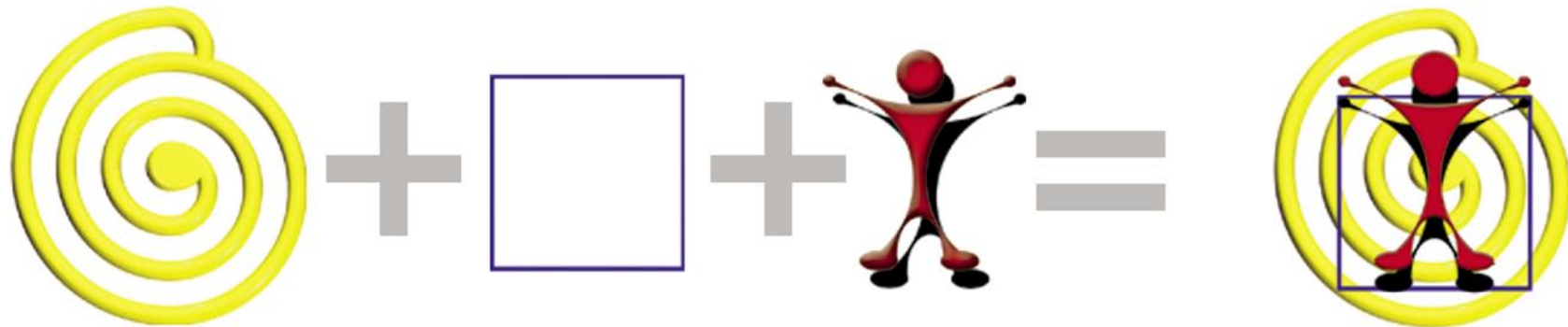
Feel free to contact us or visit our website for more details.



Packed
and sent

directly from the
factory
in Sweden





Théorème of
"Iriarte's
Bicentrical
Spiral"

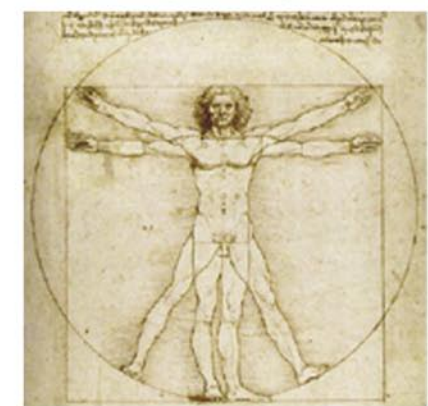


Safety
Norms
Standards
Rules
Act
Function



Rädda Barnen
Save the Children Sweden

Antropometrical
proportion
of children



ART = ARS ARTIS ~ Latin
TEC = Tekné ~ Greek

ART & TECHNOLOGY







Design Safety according to
European norms and standards
EN 1176:2008 and Universal Design

info@artotec.org

www.artotec.se

design *biarte*

Attention! Images, texts and propositions are protected by the law for the public autor, and can not be published, distributated or copying without lthe exclusiv autorisation of ARTOTEC

version 2010-03-02